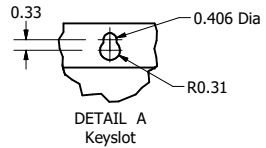


HGP Open Part Number	Schematic Drawing #	Approx Weight (LBS)
HGP0010DW0S0000	28697-208S	120
HGP0010DW0C0000	28697-208	125
HGP0010DW0S1000	28697-DWPQ1	123
HGP0010DW0C1000	28697-DWPQ	128

HGP Part Number	HorsePower (HP)	kVar	Harmonic	Voltage (V)	Hz.	Phase
HGP0010DW----	10	2.8	5th	208	60	3

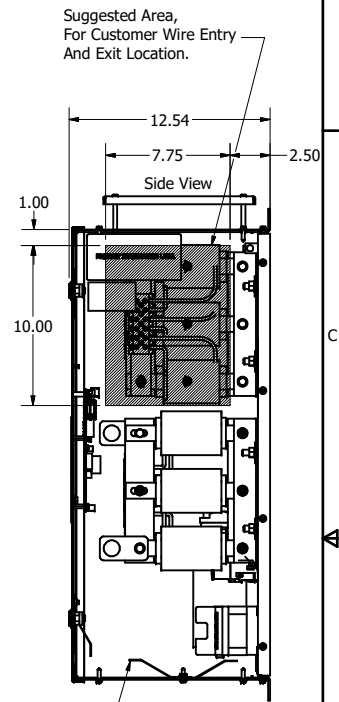
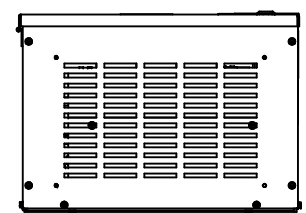
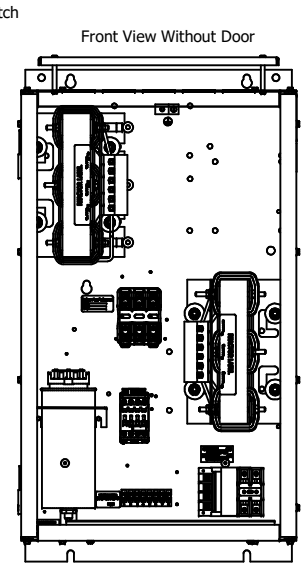
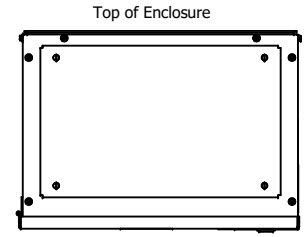
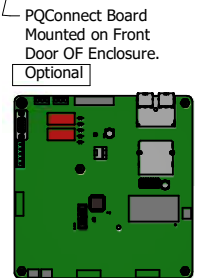
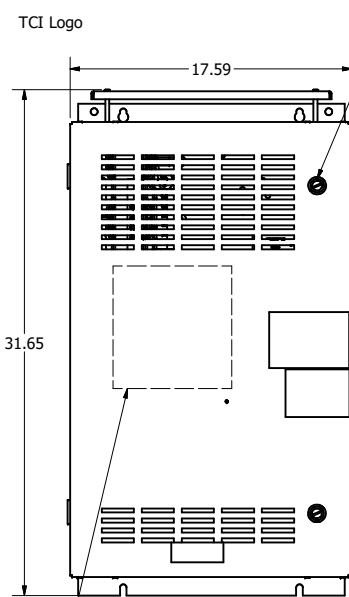
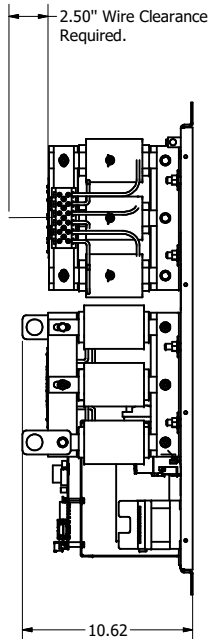
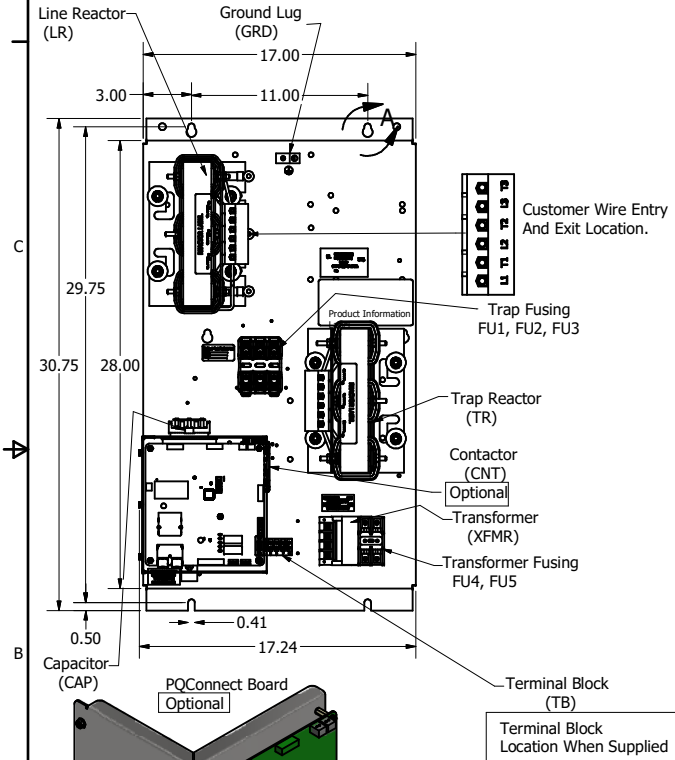
HGP Enclosed Type 1 Part Number	Schematic Drawing #	Approx Weight (LBS)
HGP0010DW1S0000	28697-208S	185
HGP0010DW1C0000	28697-208	190
HGP0010DW1S1000	28697-DWPQ1	186
HGP0010DW1C1000	28697-DWPQ	191



Note: For Torque Information See IOM Manual

Customer Connections.
L1, T1, L2, T2, L3, T3
Wire Range: 1 AWG to 22 AWG.

Ground Lug
Wire Range: 1/0 to 14 AWG.



Note: Customer is responsible for proper cooling of filter components on open panels. Capacitors Maximum Ambient 50°C.

HGP0010DW----				
Components	0S0000/1S0000	0C0000/1C0000	0S1000/1S1000	0C1000/1C1000
Line Reactor (LR)	X	X	X	X
Trap Reactor (TR)	X	X	X	X
Capacitor (Cap)	X	X	X	X
Trap Fusing, FU1, FU2, FU3	X	X	X	X
Contactor (CNT)		X		X
Transformer (XFMR)		X	X	X
XFMR Fusing, FU4, FU5		X	X	X
PQConnect Board			X	X

Customer Is Responsible For Installation to Meet All National And Local Electrical Codes.

Material(s) Shall be RoHS Compliant

THE INFORMATION AND DESIGNS CONTAINED IN THIS DRAWING ARE CONFIDENTIAL AND THE PROPRIETARY PROPERTY OF ALLIED MOTION TECHNOLOGIES INC. AND ITS SUBSIDIARIES. NEITHER THIS DESIGN NOR ANY INFORMATION CONTAINED IN THIS DRAWING MAY BE REPRODUCED OR DISCLOSED TO OTHERS WITHOUT THE EXPRESS WRITTEN CONSENT OF ALLIED MOTION TECHNOLOGIES INC. AND ITS SUBSIDIARIES.

NO	REVISION	DATE	BY
C	PQConnect Board Added.	11/05/20	JRN

TOLERANCES (EXCEPT AS NOTED)	
DECIMAL	.XX ± .25 .XXX ± .10
FRACTIONAL	± 1/32
ANGULAR	± 1°

TCI W132N10611 (Rev 13 Feb 2022)
 An Allied Motion Company © 2023 TCI, LLC
 Harmonic Guard Passive
 HGP, 10HP, 208/3/60, Open and Type 1.
 DESIGNED BY: BSW DATE: 10/11/13 FILE: 106028DG
 SCALE: 1/8 DRAWN BY: JRN SHEET: 1 OF 1